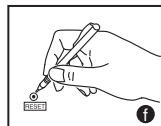
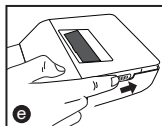
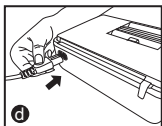
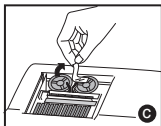
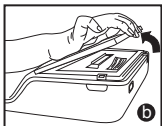
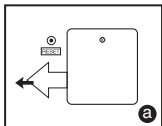


CONTENTS

BEFORE STARTING.....	P.1
INSERTING PRINTING PAPER.....	P.2
REPLACING THE INK RIBBON.....	P.2
BACKUP BATTERY	P.3
GENERAL MAINTENANCE	P.3
DECIMAL POINT SELECTOR SWITCH.....	P.4
ROUNDING SWITCH.....	P.4
GRAND TOTAL / TAX RATE SET SWITCH.....	P.4
PRINT / ITEM COUNT SWITCH.....	P.4
TAX CALCULATION FUNCTION.....	P.5
BUSINESS SALES CALCULATION.....	P.5
CLOCK & CALENDAR FUNCTION.....	P.5
AUTO POWER SAVE	P.5
OVERFLOW.....	P.6
SPECIFICATIONS.....	P.6
CALCULATION EXAMPLE	P.61-68


BEFORE STARTING

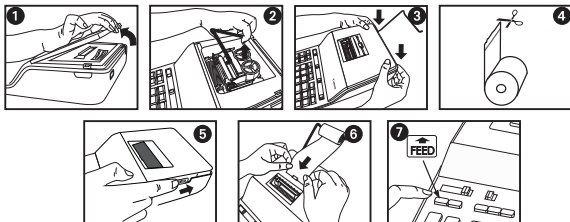
- 1) Remove the insulation tape at the back of calculator. (Figure **a**)
- 2) Remove the tape on the ink ribbon of calculator. (Figure **b**, **c**)
- 3) Plug in AC power cord. (Figure **d**)
- 4) Turn the power switch on. (Figure **e**)
- 5) Press [RESET] key before use. (Figure **f**)



INSERTING PRINTING PAPER

Note : Turn the power off

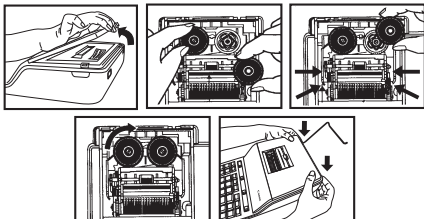
- 1) Remove the printer cover (Figure 1) and lift up the paper arm (Figure 2).
- 2) Replace the printer cover (Figure 3).
 - When inserting the paper, cut the edge of the paper as shown (Figure 4).
- 3) Turn the power switch on (Figure 5).
- 4) Place the new paper roll on the arm. The edge of the paper should be positioned as shown (Figure 6).
 - Suitable paper roll -- Width : 57mm (2-1/4") / Diameter: 86mm (3-3/8")
- 5) Press the paper feed key  to advance the paper (Figure 7).



REPLACING THE INK RIBBON

Note: Turn the power off.

- 1) Remove the cover and lift up the paper arm.
- 2) Lift ribbon spools off the shafts. Discard the old ribbon and spools.
- 3) Place the ribbon spool on the left spool pin and push it down until it clicks.
- 4) Thread the ribbon along the outer edge of the side guide, making sure that the black half of the ribbon is still on the top.
- 5) Place the ribbon between the printing ring and printing roller. Thread the ribbon along the outer edge of the left side guide.
- 6) Place the other ribbon spool on another spool pin.
- 7) Push the spool down until it clicks.
- 8) Take up any ribbon slack by rotating the left spool counterclockwise.
- 9) Replace the printer cover.



IMPORTANT: Use only the same type of ribbon spools.

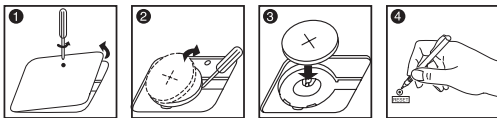
BACKUP BATTERY

Memory backup battery retains the tax rate, calendar and clock setting, even if the power is off or the AC cord is disconnected.

Battery : 1 Lithium battery (Type : CR2032)

Battery life : Backup time 2000 hours

CAUTION: Risk of explosion if battery is replaced by an incorrect type.
Dispose of used batteries according to the instruction.
Dispose of batteries according to local regulations. Do not dispose as household waste.



After replace the back-up battery, press the [RESET] button, after resetting be sure to set the tax rate, clock and calendar again.

GENERAL MAINTENANCE

- 1) Do not use or leave the calculator under direct sunlight. Press subject to rapid temperature changes, high humidity, dust and dirt should also be avoided.
- 2) Use a dry cloth to clean the casing of the unit. Do not use water or detergents.
- 3) Activate the printer when the paper roll is loaded.
- 4) Avoid using the calculator in places where there are iron filings, as this may affect the electrical circuits of the calculator.
- 5) Do not place anything on top of the machine, particularly on top of the printer mechanism.
- 6) Turn the calculator off before removing the plug from the electrical outlet.
- 7) Pull the main plug out of the wall socket if you want to switch off the main power or in case of electrical fault (i.e. smoke), disconnect the plug from the electrical socket outlet immediately.
- 8) The AC outlet must be located near the equipment and easily accessible.
- 9) Under the environment with electrostatic discharge, the sample may malfunction and require user to reset the sample.

DECIMAL POINT SELECTOR SWITCH



– Used for designating the decimal point position (+ 0 2 3 4 6 F) for calculated results.



+ (Add-Mode) – Addition and subtraction functions are performed with an automatic 2-digit decimal. It is convenient for currency calculations.



F (Floating Decimal Point) – All effective numbers up to 12 digits are printed or displayed.

ROUNDING SWITCH



– Used for round-up [\uparrow], round-off [5/4], or round-down [\downarrow] to the pre-selected decimal digits in the result.

GRAND TOTAL / TAX RATE SET SWITCH

GRAND TOTAL



– When the calculations are performed with the GT switch set to "ON", the total(s) are accumulated in the grand total memory. Each time [*] is pressed, the subtotal number is printed with the symbols G+. When [GT] is pressed, the intermediate grand total is printed with the symbols G◇. Press [GT] successively to get the grand total followed by the symbols G✳.

TAX RATE SET



– Set switch to "TAX RATE SET" for setting or recalling the TAX rate.

PRINT / ITEM COUNT SWITCH



Print Off – Entries and results will appear on the display, but will not be printed out.



Print On – Entries and results will appear on the display and will be printed out.



Item – Set switch to "ITEM" to count the number of times the [+], [-], [M \pm] and [M \pm] keys have been pressed. The item count will be printed on the left hand side of the paper roll (up to 999 times) when the [\diamond], [*], [M \diamond] or [M*] keys are pressed.

TAX CALCULATION FUNCTION





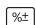
TAX+ **Add Tax Key** – Used for adding the tax amount to the displayed figure.

TAX- **Deduct Tax Key** – Used for deducting the tax amount from the displayed figure.

BUSINESS SALES CALCULATION


COST **SELL** **MARGIN** – Used for calculating the cost, selling price and profit margin value. Enter the value of any 2 items to obtain the balance value item. (e.g. enter the value of the cost and the selling price to obtain the profit margin %.)

CLOCK & CALENDAR FUNCTION

-  – Used to switch between calendar or clock mode.
-  – Used to switch between 12 or 24 hour at clock mode.
-  – Used to set the date and time in calendar & clock mode.
-  – Used to switch between AM or PM at clock mode time setting.
-  – Used to select date format between "YYYY/MM/DD", "DD/MM/YYYY" or "MM/DD/YYYY" at calendar mode.

• **Note:** If all the power sources and backup battery “CR2032” are disconnected, the clock, calendar and tax rate will be cleared. In this case, please set the clock, calendar and tax rate again.

AUTO POWER SAVE

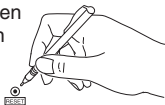
When the power is turned "ON" and the calculator is not being used for approx. 7 minutes, the calculator will switch to power save mode automatically with orange LED light-up. Press  key, the calculator will return to normal calculation mode.

OVERFLOW

In the following cases, when "E" is displayed, "ERR" is printed, the keyboard is electronically locked, and further operation is impossible.

Press $\left[\begin{array}{c} CE \\ C \end{array} \right]$ to clear the overflow. The overflow occurs when:

1. The result or the memory content exceeds 12 digits to the left of the decimal point.
 2. Dividing by "0".
 3. The sequential operation speed is faster than the calculation processing speed. (Buffer Register Overflow)
- Electromagnetic interference or electrostatic discharge may cause the display to malfunction or the memory, currency rate and tax rate to be lost or altered. Should this occur, use the tip of a ballpoint pen (or similar sharp object) to press the [RESET] button on the back of the calculator. After resetting be sure to set the calendar, clock and tax rate again.



SPECIFICATIONS

Power Source: AC100V – 240V, 50/60Hz

Automatic Power Off: Approx. 7 minutes


Operation Temperature: 0°C to 40°C

Calculating Capacity: 12 digits maximum

Dimension: 320mm (L) x 193 mm (W) x 71mm (H)

Weight: 1,506 g

(Subject to change without notice)

-  The bottom case and printer cover in this product are made from Canon recycled material.

European Union (and EEA) only.

These symbols indicate that this product is not to be disposed of with your household waste, according to the WEEE Directive (2002/96/EC), the Battery Directive (2006/66/EC) and/or your national laws implementing those Directives.

This product should be handed over to a designated collection point, e.g., on an authorized one-for-one basis when you buy a new similar product or to an authorized collection site for recycling waste electrical and electronic equipment (EEE) and batteries and accumulators. Improper handling of this type of waste could have a possible impact on the environment and human health due to potentially hazardous substances that are generally associated with EEE. Your cooperation in the correct disposal of this product will contribute to the effective usage of natural resources.

For more information about the recycling of this product, please contact your local city office, waste authority, approved scheme or your household waste disposal service or visit

www.canon-europe.com/environment.

(EEA: Norway, Iceland and Liechtenstein)

